



Oil & Grit Interceptors

Technical Specifications

Austin Bluewater Oil & Grit Interceptors are the technical solution for the separation of oil & grit from stormwater runoff at fuel stations, car parks, commercial spaces, contracting environments and industrial wash down bays.

Purpose

Oil and grit interceptors are an effective and simple solution to separate and store grits and all types of oils from lightly contaminated storm water and wash-down water. They are required for the separation of heavy solids (sand & grit) and floating hydrocarbons from storm water or wash down areas. They are typically used in industrial and commercial applications where there is potential risk for contamination from hydrocarbon products into waterways.

The multi chambered treatment tank is installed close to the collection point (to ensure the oil reaches the interceptor before it emulsifies or pollutes the area) allowing for the storm water / wash down water to flow into the settlement chambers prior to entering a storm water lateral or disposal system.

The Austin Bluewater Oil & Grit Interceptor is not recommended to be used in applications where large spills of hydrocarbon based materials are a possibility. Please seek professional advice or ensure a suitable engineered solution is provided for large scale applications.

Suitable Applications

The Austin Bluewater Oil & Grit Interceptor can be used in the following applications:

- Driveways
- Loading bays
- Small sealed car parks
- Commercial carwash facilities
- Wash down bays
- Depots or terminals
- Pre-treatment to a retention tank or pond
- Industrial yards

Features

- Multi-chambered tank design - engineered for effective grit and oil separation
- Watertight construction of tank preventing water ingress
- Manufactured using steel reinforced 45mpa commercial strength concrete
- Robust design for commercial applications
- Swift lift anchors to ensure easy manoeuvrability and cartage
- Option to customise design to suit the application
- Options for cast iron manhole covers
- Customised options for inlet and outlet pipework
- Engineered designs for heavy duty trafficable lids

Approvals & Standards

Built to NZS 3109, Concrete Construction New Zealand Standard

Installation

Austin Bluewater Oil & Grit Interceptors are manufactured with swift lift anchors cast into the body of the tank and are designed to be lifted with chains mounted to a spreader bar.

The tank must be seated on solid compacted and levelled hard fill. The tank must also be back filled with hard fill to avoid settlement.

Ensure your chosen model allows for the correct inlet and outlet size to match the pipework you are connecting to.

Refer to our full installation guide at: www.austinbluewater.co.nz

Unit Maintenance

Your Oil & Grit Interceptor must be maintained to ensure effective interception of oil & grits. The maintenance intervals will be determined by the regularity and volume of the hydraulic loads. The concentration of contaminants will also have an effect as to how often the system will need servicing. These factors will vary depending on the application. Regular removal of trapped grits and oils will ensure this system is always performing at its best.

In all cases, a formalised routine of checking the level of settled grit on the bottom of each chamber and identifying the volume of settled oils on the service of the tank will ensure the correct level of maintenance is determined for your application.

Austin Bluewater recommend that after installation, the system is checked monthly to determine the required level of maintenance.

When the oil retention capacity has reached 40-50%, the chambers must be emptied. All chambers need to be sucked out, removing the settled grits, water and the remaining oils & hydrocarbon pollutants.

The trapped pollutants held within the Oil & Grit Interceptor must be disposed of in accordance with your local authority's regulations. The contents of the tank must be declared to the contracted cleaning company to ensure proper disposal.

Refill the oil and grit interceptor with fresh clean water to allow the system to begin working immediately after cleaning.

Working inside a tank has significant risks. Ensure that anyone considering entering a tank complies with all relevant 'Confined Space Entry' requirements and guidelines. Beware of gases and harmful contaminants that could be present.

Please consult with Austin Bluewater's technical team should you require further information or assistance.

Austin Bluewater Oil & Grit Interceptor Range

Model	Working Capacity	Total Capacity	Transfer Pipework	Lid
OG15	1230L	1450L	100mm	Standard lid
OG15HD	1230L	1450L	100mm	HD lid non trafficable
OG33	2800L	3300L	100mm	Standard lid
OG33-150	2600L	3300L	150mm	Standard lid
OG33HN-HO-72	2800L	3300L	100mm	HN-HO-72 traffic load rated
OG33HN-HO-72-150	2600L	3300L	150mm	HN-HO-72 traffic load rated
OG65	4800L	6150L	100mm	Standard lid
OG65-150	4800L	6150L	150mm	Standard lid
OG65HN-HO-72	4800L	6150L	100mm	HN-HO-72 traffic load rated
OG65HN-HO-72-150	4800L	6150L	150mm	HN-HO-72 traffic load rated

Larger sized inlets/outlets can be installed for customised applications. For dimensions and weights of all systems, visit www.austinbluewater.co.nz or call the Austin Bluewater technical team on 0800 AUSTIN.

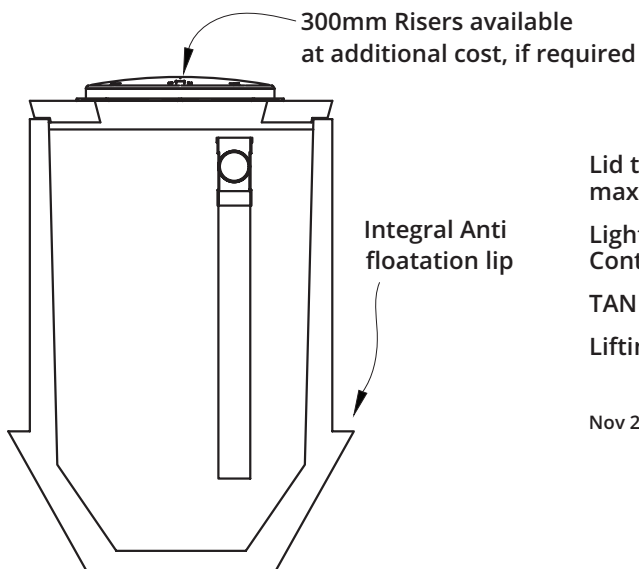
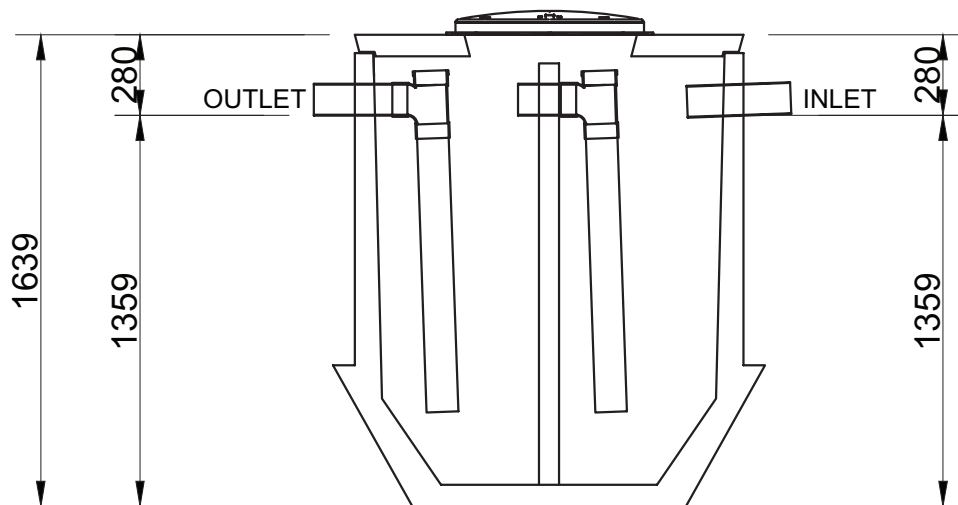
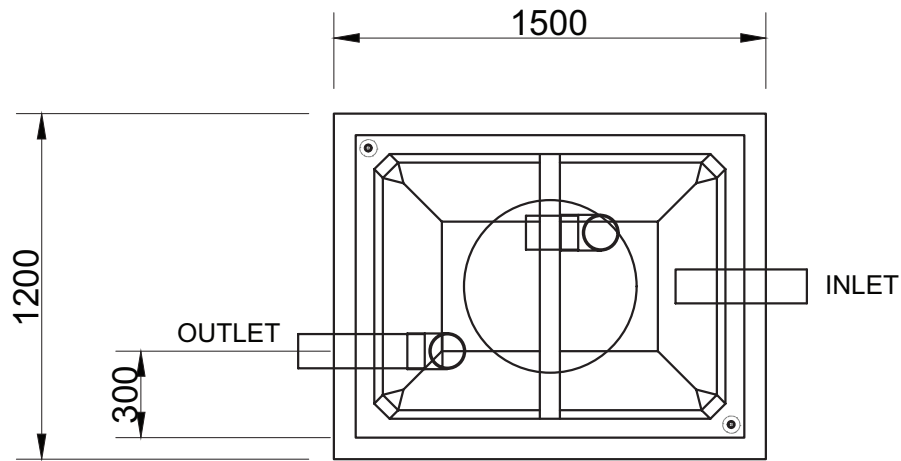
Lid Options

Concrete lift out lids come as standard. Lockable heavy duty lids are available on request.

Circular 600mm cast iron non vented manhole covers available for heavy duty HN-HO-72 rated models.

Other options: Square cast iron non vented manhole covers, cast iron grates for surface collection, concrete lift out lids, Polylok circular lockable lids & risers. Discuss your requirements with your sales engineer.

Contact Austin Bluewater for further information or manufacturing options.



Lid thickness standard at 80mm. Recommended maximum loose soil cover depth - 400mm.

Light trafficable / heavy duty lids are available to order. Contact Austin Bluewater technical department.

TANK Weight - with 80mm lid = 2.1 t

Lifting - 2 x Reid 1.3 eye anchors.

Nov 2019 - opening centralised in lid



Christchurch Head Office
20 Illinois Drive, Rolleston
0800 AUSTIN (0800 287 846)
www.austinbluewater.co.nz

Oil & Grit Interceptor

1500 Litre Capacity

THE COPYRIGHT OF THIS DRAWING REMAINS WITH AUSTIN BLUEWATER ENVIRONMENTAL CONCEPTS LTD

Product code:

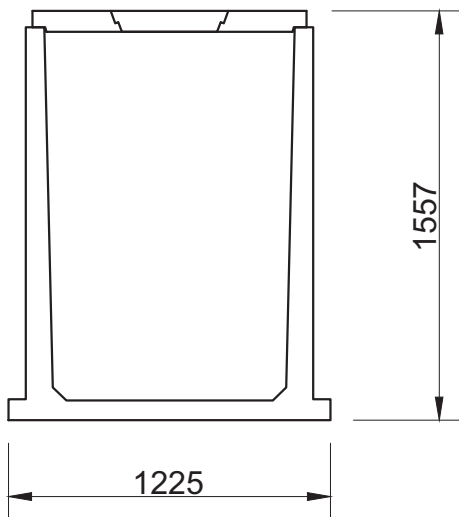
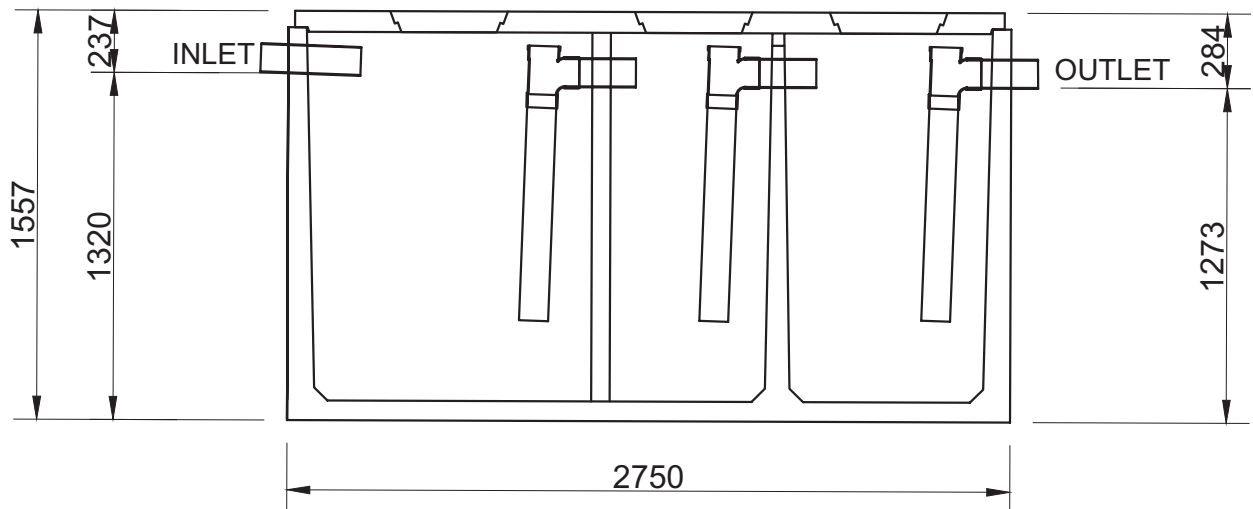
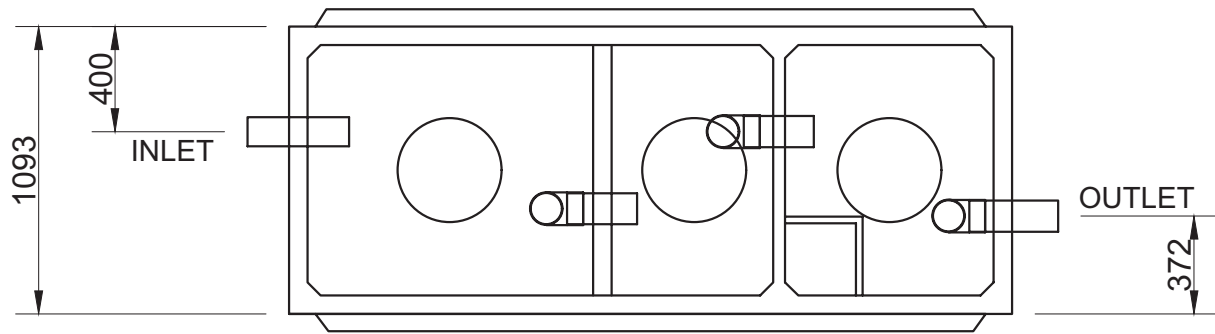
OG15

Scale: NTS

Drawn: GN

Date: 07/17

Rev:
May 2023



Lid thickness standard at 80mm. Recommended maximum loose soil cover depth - 400mm.

Light trafficable / heavy duty lids are available to order. Contact Austin Bluewater technical department.

TANK Weight - including 80 mm lid = 3.9 tonne

Lifting - 4 x Reid 2.5 t eye anchors. Equalising beam must be used to ensure equal loading to all lifting anchors.

Unit supplied with 3 lift out concrete lids as standard. To extend with turrets use 400 dia Farm Tuff pipe.



Christchurch Head Office
20 Illinois Drive, Rolleston
0800 AUSTIN (0800 287 846)
www.austinbluewater.co.nz

Oil & Grit Interceptor

3300 Litre Capacity

THE COPYRIGHT OF THIS DRAWING REMAINS WITH AUSTIN BLUEWATER ENVIRONMENTAL CONCEPTS LTD

Product code:

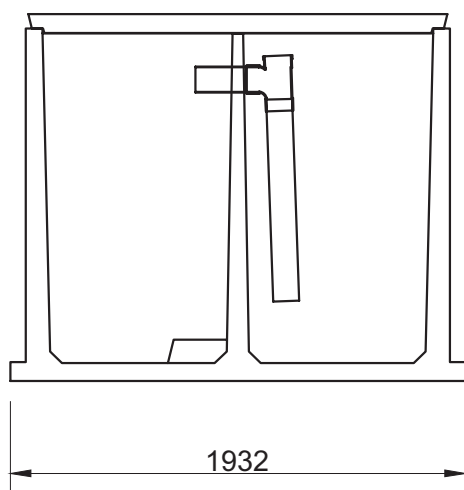
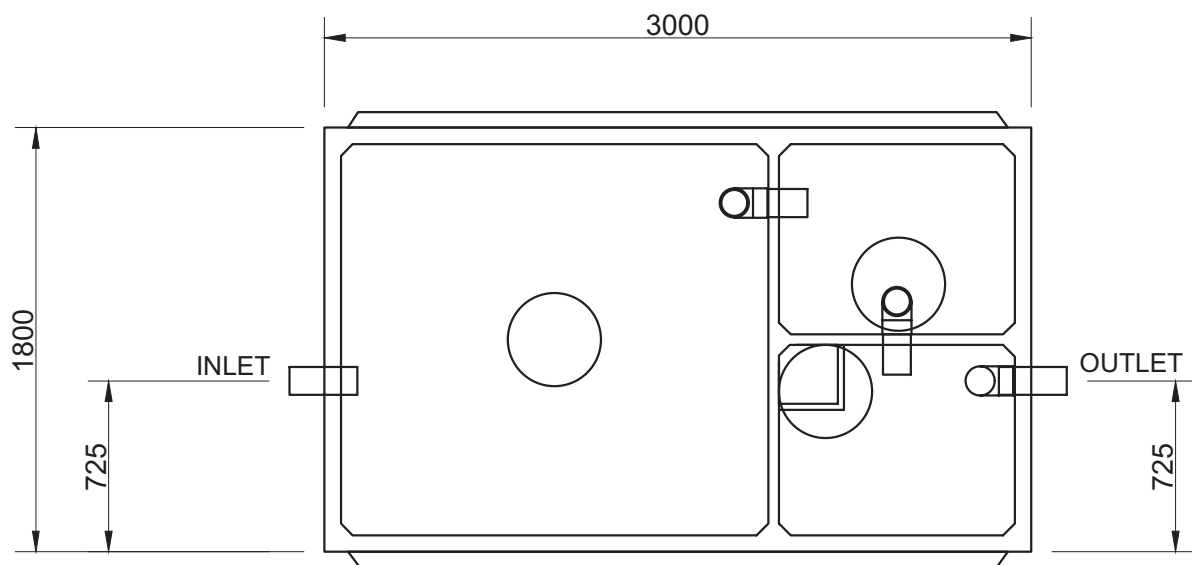
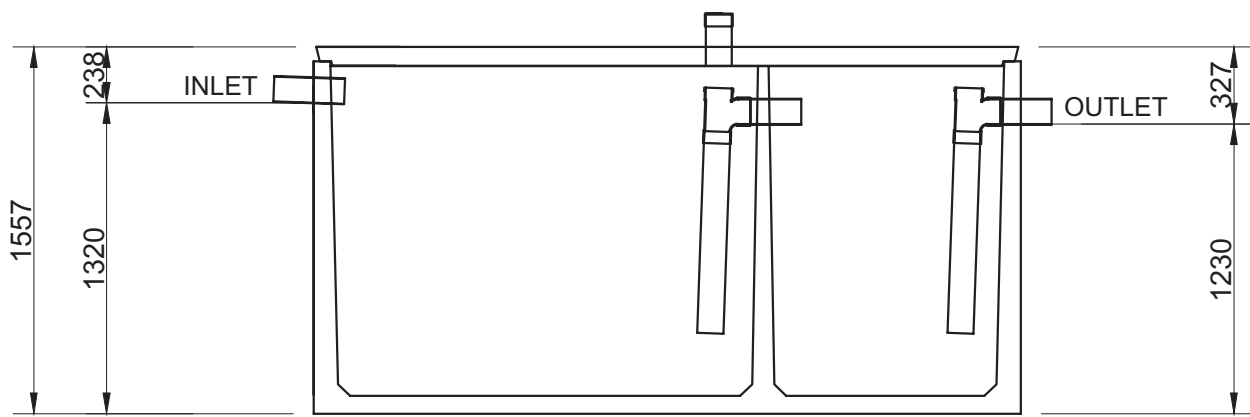
OG33

Scale: NTS

Drawn: GN

Date: 07/17

Rev:
Jun 2023



Unit supplied with 3 lift out concrete lids as standard.
To extend with turrets use 400 dia Farm Tuff pipe.

Lid thickness standard at 80mm. Recommended
maximum loose soil cover depth - 400mm

Light Trafficable / heavy duty lids are available to order.
Contact Austin Bluewater technical department.

TANK Weight - including 80 mm lid = 5.7 tonne
Lifting - 4 number Reid 2.5 t eye anchors
When handling an equalising beam must be used
to ensure equal loading to all lifting anchors



Christchurch Head Office
20 Illinois Drive, Rolleston
0800 AUSTIN (0800 287 846)
www.austinbluewater.co.nz

Oil & Grit Interceptor

6500 Litre Capacity

THE COPYRIGHT OF THIS DRAWING REMAINS WITH AUSTIN BLUEWATER ENVIRONMENTAL CONCEPTS LTD

Product code:

OG65

Scale: NTS

Drawn: GN

Date: 07/17

Rev:
Jun 2023





Engineering the future of wastewater

0800 AUSTIN

(0800 287 846)

www.austinbluewater.co.nz